

Southwell
Minster
THE CATHEDRAL CHURCH OF
THE BLESSED VIRGIN MARY



Southwell Minster

A Fairtrade Place of Worship





Southwell
Minster
THE CATHEDRAL CHURCH OF
THE BLESSED VIRGIN MARY



A Fairtrade Cathedral in Action

- What is Fairtrade?
- A brief history and Southwell Minsters Journey
- Fairtrade Network and the National Campaign Committee
- The Fairtrade Mark
- Fairtrade's Unique Contribution – Debt Injustice
- Product Availability
- Product examples (tea, coffee and bananas) and impact
- A Fairtrade Church/Cathedral - role and responsibilities
- Supporting Fairtrade – How you can help : The Bigger Picture
- Summary

What is Fairtrade?

- Global movement changing the way trade works
- Fair prices for producers
- Better working conditions
- Sustainable farming
- Fair terms of trade
- FAIRTRADE Mark logo



A Brief History

- 1940s–50s: Alternative trade pioneers
- 1988: First Fairtrade label (Max Havelaar)
- 1994: Fairtrade Foundation UK formed
- Now: Over 1.9 million farmers & workers worldwide

Southwell Minsters Journey

- The movement to establish Fairtrade in Southwell began in 2003.
- The Minster became a Fairtrade Cathedral around 2005.
- Southwell was registered as a Fairtrade Town in March 2006.

An account of these events is detailed in Bishop Ronald Milner's book "*Time's Winged Chariot*", Chapter 23.

Fairtrade a Global network with local expertise

The Fairtrade system is made up of:

- Three regional producer networks representing more than 1,930 organizations of farmers and workers in Africa and the Middle East, Asia and the Pacific, and Latin America and the Caribbean.
- More than 25 Fairtrade organizations that market and promote Fairtrade products in their countries.
- Fairtrade International, the umbrella non-profit organization that creates the internationally agreed Fairtrade Standards and coordinates Fairtrade worldwide.
- FLOCERT, the independent certifier for Fairtrade.



Southwell
Minster
THE CATHEDRAL CHURCH OF
THE BLESSED VIRGIN MARY



The Fairtrade Foundation National Campaign Committee

- Established to promote Fairtrade in the UK
- Works within the global Fairtrade movement (Fairtrade International)
- Supports farmers & workers through better prices and working conditions
- Engages communities, businesses, faith groups, schools and universities to raise awareness



Southwell
Minster
THE CATHEDRAL CHURCH OF
THE BLESSED VIRGIN MARY



The FAIRTRADE Mark

Carries a powerful message

- Symbol of fair prices, safe working conditions, and sustainable production.
- Designed to celebrate farmers.
- Ensures a fair minimum price and a community Fairtrade Premium for vital services.
- Every purchase supports lasting, positive change





Fairtrade's Unique Contribution

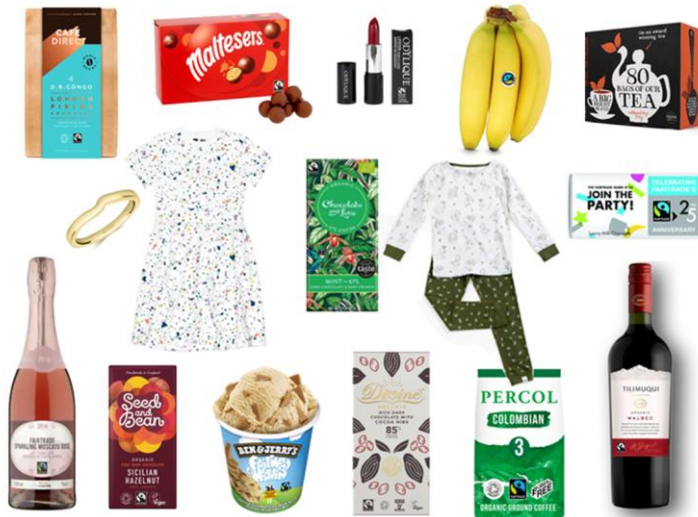
- Empowers producers, not just an audit of working conditions
- Guarantees a minimum price
- Premium funds schools, clinics, local infrastructure
- A clear Fairtrade Mark for ethical consumer choice

Fairtrade tackles debt injustice

- Unfair global trade and exploitative terms trap farmers in debt.
- Low crop prices & high costs lead to cycles of poverty.
- Fairtrade ensures fair prices, better contracts & community investment.
- Helps break debt cycles and empowers producer sustainably.



Southwell
Minster
THE CATHEDRAL CHURCH OF
THE BLESSED VIRGIN MARY



- Over 6,000 Fairtrade products are available worldwide.
- Includes everyday staples like tea, coffee, and chocolate.
- Also covers fresh produce, clothing, and even gold.



- Fairtrade's global map highlights its worldwide reach.
- Connects coffee farms in Latin America, cocoa growers in West Africa, and tea plantations in Asia.
- Links consumers to farmers, producers, and workers across the globe.
- Every Fairtrade product supports real people and communities in over 70 countries.



Southwell
Minster
THE CATHEDRAL CHURCH OF
THE BLESSED VIRGIN MARY



Fairtrade Tea Plantation



This image shows tea pickers in Kenya who are part of a Fairtrade-certified cooperative. Tea is one of the most widely traded Fairtrade commodities, supporting millions of livelihoods.

- Fairtrade ensures that workers:
- Earn fair wages.
- Work in safer conditions.
- Benefit from community projects funded by Fairtrade premiums.
- It demonstrates that ethical sourcing is more than just a label — it's a lifeline for communities.

Fairtrade Coffee



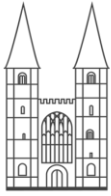
This slide depicts coffee farmers sorting beans to ensure quality before roasting and export.

- Fairtrade helps smallholder farmers combat price volatility and climate challenges.
- Farmers often invest premiums in better processing facilities and training to improve yields and quality.

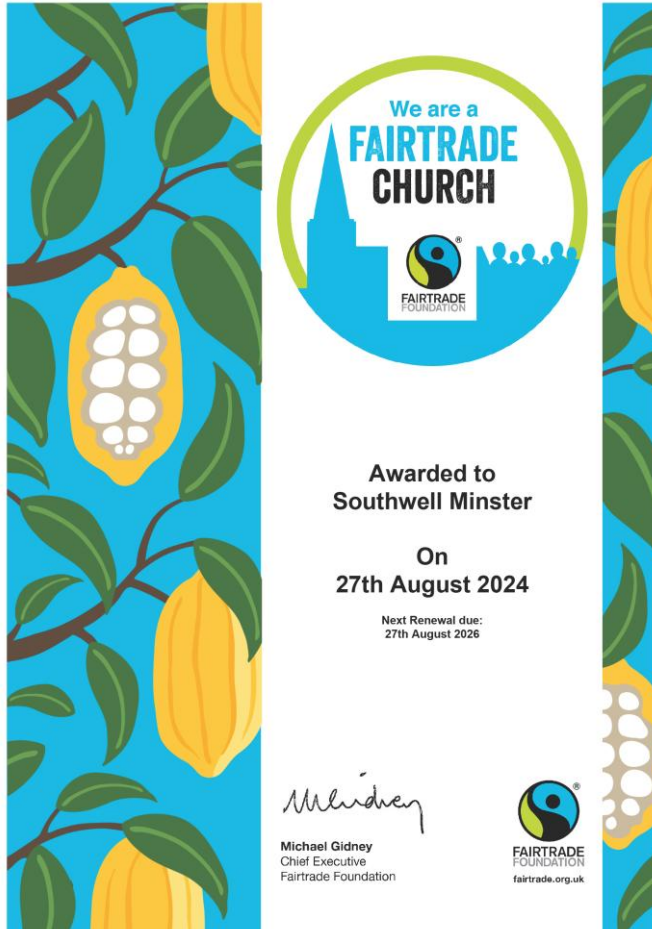
Fairtrade Bananas



- A worker at the BANELINO cooperative in the Dominican Republic, selecting bananas for export.
- Fairtrade certification ensures safer working environments and community benefits, such as education programs and healthcare.
- The banana sector is critical for many Latin American economies, but are also vulnerable to unfair pricing—Fairtrade helps address this imbalance.



**Southwell
Minster**
THE CATHEDRAL CHURCH OF
THE BLESSED VIRGIN MARY



A Fairtrade Church

A Fairtrade Cathedral

Core Requirements

- Use Fairtrade products wherever possible (at least tea, coffee, sugar).
- Promote Fairtrade within the congregation (posters, notices, sermons, etc.).
- Incorporate Fairtrade into cathedral life (e.g. events, services, café/shop use).

A Fairtrade Cathedral

Supporting Actions

- Extend Fairtrade use (e.g. biscuits, fruit, visitor centre goods).
- Host or support Fairtrade Fortnight and awareness activities.
- Communicate commitment via newsletters, website, or displays.

A Fairtrade Cathedral

Ongoing Commitment

- Renew registration periodically with the Fairtrade Foundation.
- Continue demonstrating active support and ethical sourcing.

Why Support Fairtrade?



Fairtrade guarantees:

- Minimum prices & Fairtrade Premiums
- Direct support for farmers & producers



Why it matters to us:

- Ethical, sustainable supply chains
- Builds global resilience & food security



Our local impact:

- Aligns with Southwell Minsters community values
- Small choices, big difference — even in tough times

Supporting Fairtrade in the Minster

- Is more than just a label — it's a statement of identity.
- It reflects a commitment to fairness and sustainability.
- It connects the Minster to millions of people worldwide working toward the same goal.
- It shows Southwell Minsters leadership through everyday choices and community action.

How You Can Help

- ✓ Choose Fairtrade when you shop
- ✓ Ask shops & cafés to stock it
- ✓ Volunteer or spread the word
- ✓ Support local Fairtrade events



Southwell
Minster
THE CATHEDRAL CHURCH OF
THE BLESSED VIRGIN MARY



The Bigger Picture

- “Think globally, act locally”
- Small town, big impact
- Fairtrade empowers producers



Summary



- Southwell Minster is a Fairtrade Cathedral.
- Fairtrade is about values in action, not just product labels.
- Choosing Fairtrade means supporting fairness, sustainability, and dignity for global producers.
- Everyday choices create positive ripple effects worldwide.
- Fairtrade status is more than a badge — it's a promise to uphold justice and compassion through daily actions.
- Together, Southwell Minster aims to build a fairer, more compassionate world, one choice at a time.