



PLEASE DONATE. We rely on donations to keep our beautiful buildings and gardens open to the public.

Help us to do this for another 140 years.

You can donate:

- at our Cash Boxes and Contactless Machines inside the Minster
- by scanning this QR code
- on our website: www.southwellminster.org



TOURS AND GUIDEBOOKS

If you would like to delve deeper into the history of the Cathedral, Gardens and Palace, you can book a tour online by scanning this QR code or at www.southwellminster.org



Guidebooks are available at the Welcome Desk and in the Cathedral Shop.

SHOP WITH US...

...and help support the Minster. Our fabulous Cathedral Shop is packed with gifts, books and locally made items. 100% of profits go towards maintaining the Minster for future generations. You can also shop online at www.southwellminster.org



JUST FOR FUN

CAN YOU FIND ME?

*I have a tail
but I'm not a mouse.
I have soft fur
and I live in your house.
I purr when I'm happy
and I love to chase.*

*What am I,
with a whiskered face?*



Welcome to
**SOUTHWELL
MINSTER**

CELEBRATING 140 YEARS AS A CATHEDRAL
July 2024

*This month's exhibition is sponsored by, and dedicated to,
the MINSTER GUILD OF STEWARDS*



Welcome to one of England's most beautiful and tranquil cathedrals. We are delighted you are here today, whether for the first time or for a return visit.

I invite you to relax, enjoy, explore and linger a while to soak in this very special, holy place.

Southwell Minster has been inspiring visitors from across the world with its graceful architecture, fascinating history and daily choral worship for over a thousand years.

Your visit to us is a blessing and we pray that you will be blessed by all you see, hear, touch and experience.

May God's love and peace rest on you.

The Very Revd Nicola Sullivan
Dean of Southwell

This year we celebrate our 140th anniversary of becoming a Cathedral. As part of this we have a special 10-month exhibition, where we explore over 1,000 years of history in 140 objects.

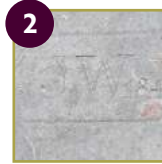
Each month we will showcase 14 objects from a period in our history, from the Romans to the present day.

This Month:
TRANSFORMING
TIMES: Town and
County, 1700s &
1800s.

There are 14 objects
to enjoy. We invite
you to wander and
explore.



1
A Flash of Lightning on Guy Fawkes Night



2
1842 Roof Tile



3
Bramley Apple Window



4
Southwell Theatre Playbill



5
Thomas Girtin Watercolour



6
Southwell Minster Watercolour



7
King's Messenger Badge



8
Closed for Business: The Restoration of Southwell Minster



9
Willoughby of Wollaton Hall



10
Gally Knight Windows



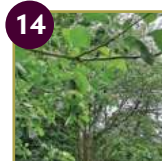
11
The Newstead Abbey Lectern



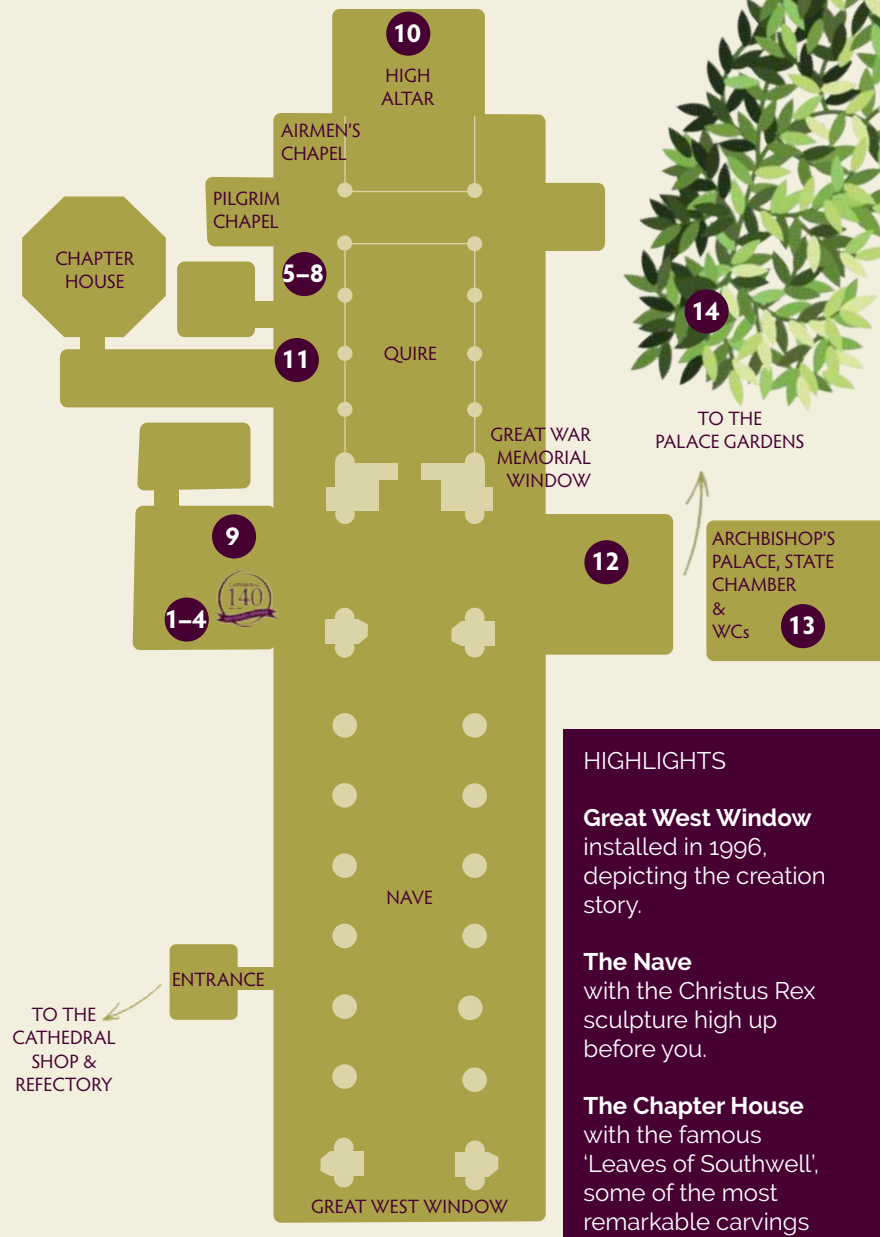
12
Becher and the Story of the Workhouse



13
Mompesson of Eyam's Flagon



14
Bramley Apple Tree



HIGHLIGHTS

Great West Window
installed in 1996, depicting the creation story.

The Nave
with the Christus Rex sculpture high up before you.

The Chapter House
with the famous 'Leaves of Southwell', some of the most remarkable carvings in the world.

The Quire
where evensong has been sung for centuries. The 19th-century choir stalls are carved with plants, animals and musical instruments.

The Great War Memorial Window
installed in 2016.

The State Chamber
formerly the dining hall of Cardinal Wolsey.

The Palace Gardens
including the real-life plants and trees detailed in the Chapter House carvings.